



EVOLUTION
ELECTRIC VEHICLES

D5 SERIES

LSV4



www.evolutionelectricvehicle.com



LITHIUM BATTERY

● 5-YEAR WARRANTY ● NO MAINTENANCE ● ALUMINUM PACK

SPEC.

- 114.6×55.8×78 inch
- Adjustable Steering Column
- Cylindrical Evolution Sound Bar
- Two-tone Luxury Seats With Foldable Armrests
- Seat Back Cover With Cuphold/handrail, charging Port ,storage Pocket ,etc
- Multi-functional Dashboard
- Rear Storage Trunk
- EM Brake

LED Lighting

- Foldable Windshield with Slidable Sub-windows
- Automobile Style Rear Bumper
- 14x7" Aluminum Wheel/225/55r14" Radial Tire
- Automotive E-coat Chassis
- 9" Multi-functional Touchscreen
(Speed display ,Driving Gear indication ,Lights, Odometer, Radio ,Music ,Bluetooth Connection, Back-up camera image display ,etc)

POWER

- 48V 110AH Lithium Battery
- 6.3KW Motor With EM Brake
- 400 A, AC Controller
- 25A On-board Charger
- Top Speed ≥40km/h(25mph)



Adjustable Steering Column



9" Touchscreen



Control Switches



Storage Trunk



Microphone



Optional Golf Bag Holder



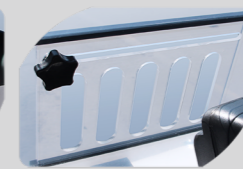
Storage Compartment



Cylindrical Evolution Sound Bar



Powered Rear View Mirrors



Slideable Air Vents



Accelerator / Brake Pedal



Tires for Lsv Models

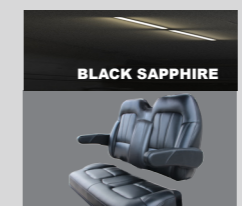
Color Matching Standard(PPG Paint)



FLAMENCO RED



MINERAL WHITE



BLACK SAPPHIRE



PORTIMAO BLUE



ARCTIC GRAY



MEDITERRANEAN BLUE



EVOLUTION ELECTRIC VEHICLES INC

Corporate Offices: 2620 Palisades Drive, Corona CA 92882
Florida Distribution: 7600 Narcoossee Rd, Orlando, FL 32822
Texas Distribution: 4053 Grand Lakes way, Grand Prairie, TX 75050
951-268-6689 info@evolutionelectricvehicle.com