



IMAGE FOR ILLUSTRATION PURPOSES ONLY



TURFMAN 800 AC

BODY & CHASSIS

TPO injection moulding front cowl

POWER

Trojan Battery T105
48V 6.3KW AC motor
400 AMP Curtis AC Controller
19mph max speed

DIMENSIONS

Turfman 800: 118"x 55" x 79"
Cargo box: 43"x 46"x 11"

FEATURES

- Black dashboard with four cup holders/ cell phone holder
- 10"Alum Wheel, 22x11-10 DOT tires
- Speedometer
- USB
- Evolution on-board smart charger
- LED Headlights, LED tail lights, brake lights, turn signals, horn
- Rear view mirrors
- Clear foldable windshield

OPTION

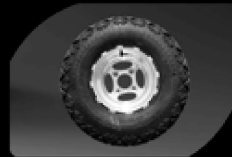
- Lithium battery
- Black roof
- Black seats
- Tinted windshield



Luxury steering wheel



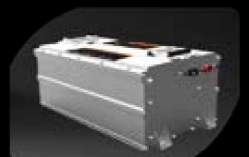
Black dashboard with four cup holders/cell phone holder



10"Alum Wheel, 22x11-10 DOT tires



Luxury seats



Lithium battery is optional

Optional color

WHITE

EVOLUTION ELECTRIC VEHICLES INC

California Headquarters: 4552 Brickell Privado, Ontario CA 91761
Florida Operations: 3420 SW 7th st., Suite# 101, Ocala FL 34474
909-393-6800 info@evolutionelectricvehicle.com
www.evolutionelectricvehicle.com

